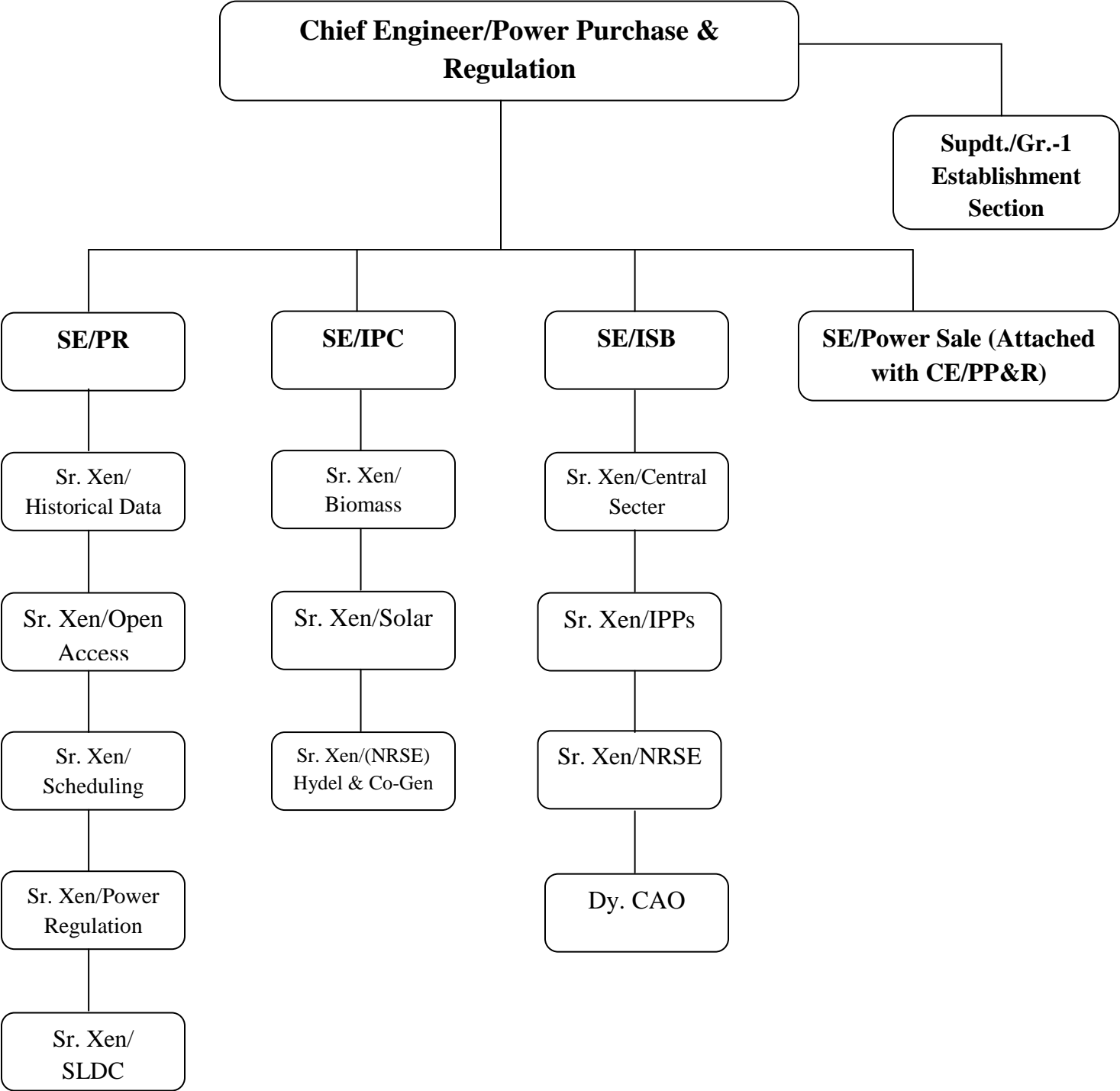


**Chief Engineer/Power Purchase & Regulation, D-3, Shakti Vihar,
PSPCL, Patiala**

Organization Structure



About Organization:

SE/PR is entrusted with the job of management of Power Regulation and Works under the overall control of the office of CE/PP&R.

SE/IPC office deals with development of Renewable Energy Projects in the State of Punjab in Coordination with PEDDA. The PPAs for the Various Renewable Energy(RE) projects of Solar, Cogeneration, Biomass and Hydel Power projects are signed by this office on behalf of PSPCL. The regulatory guidelines related to Renewable Energy to be followed by PSPCL are also looked after by this office. Various petitions and court cases related to RE projects are also dealt by this office. In addition, the court cases related to GVK Thermal Plant are also dealt by this office.

Inter State Billing office is entrusted with the work of Payment of Power Purchase from various Central Sectors generating stations, Co-generators, IPPs / CPPs, Pb. Traders etc. Power Purchase Agreements with co-generators under NRSE policy including short term Power Purchase Agreements with CPPs, ARR data etc. and Petitions concerning with Appellant Tribunal/ CERC/PSERC are being dealt by this office.

With the coming up of IPPs (Independent Power Producers), PSPCL has become power surplus for most part of the year and Power Sale wing was created and attached with this organization in November 2015 to look exclusively after the work of sale of surplus power.

Assignments/Projects/Responsibilities

1. Real Time Monitoring and control of power system operations
2. Maintaining quality, Reliability security and Economic operation of power system operations.
3. Associated activities for managing demand and supply of the power system.
4. Signing of PPAs and monitoring of Renewable Projects in the State of Punjab. The PPAs for the Various Renewable Energy(RE) projects of Solar, Cogeneration, Biomass and Small Hydel Power projects are signed by this office on behalf of PSPCL. The regulatory guidelines related to Renewable Energy to be followed by PSPCL are also looked after by this office. Various petitions and court cases related to RE projects is also

dealt by this office. In addition, the court cases related to GVK Thermal Plant is also dealt by this office.

5. This wing exclusively deals with the Sale of Surplus Power through various means like through power exchange and through participation in short term tenders floated by other utilities. The responsibility of this cell is to sell surplus power. The assignments include placing daily bid for sale / purchase of power in power exchange and bidding in short terms tenders for purchase of power floated by other utilities and floating tender enquiry for sale of power by PSPCL and its evaluation.

Projets under Implementations:

Various RE projects of Solar, Cogeneration, Biomass and Small Hydel Power projects are under development as allotted by PEDDA to various Pvt. Developers. The Implementation Agreements are signed by PEDDA before forwarding the same to PSPCL for signing of PPA with the project developers.

Achievements:

1. Met with an all time high power demand of 11705 MW on 11.7.2017 and highest ever energy demand of 2672 LUs on 10.7.2017.
2. Total Solar power added by the end of June 2017 is 894.47 MW and Non Solar 1293.07 MW. All Regulatory matters related to NRSE Projects/ Renewable energy and petitions filed by developers/ PSPCL including Court Cases of GVK Thermal Plant at different courts are being successfully dealt by this office. Further the legal matters of GVK are also being defended by this office on behalf of PSPCL.
3. Timely payments has been made and availed applicable rebate.
4. PSPCL has been able to sell surplus power to the tune of 173 MUs from 01.04.17 to 15.09.17 at the average price Rs. 3.92 per KWh where as during same period last year 97 MUs were sold at average of Rs. 3.12 per KWh. In Sep-17 only, PSPCL has sold 120 MUs at an average price of Rs.4.27 per KWh.

Address

Chief Engg. PP & R, PSPCL
D-3, Shakti Vihar, Patiala.