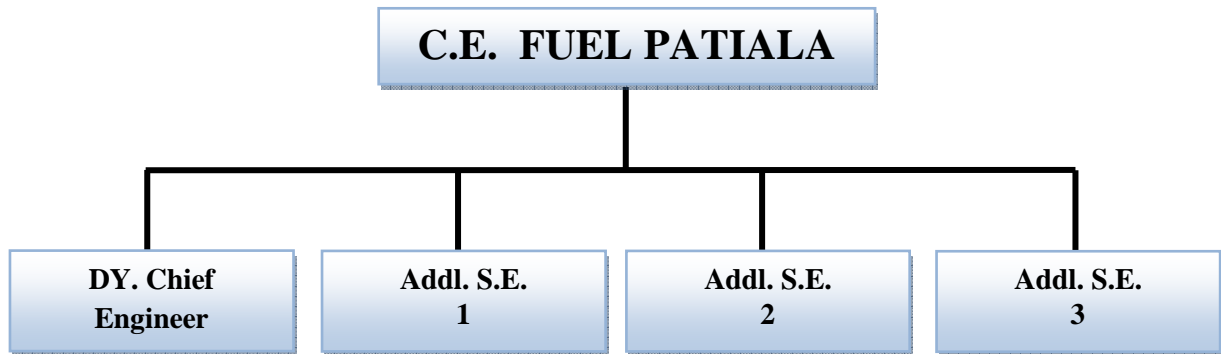


## OFFICE OF THE C.E. FUEL PSPCL PATIALA



The office of C.E. FUEL is looking after the work of management of coal supplies to PSPCL Thermal Power Station from CIL sources, M/S Panem Coal mines Ltd (captive coal mine of PSPCL) and washed coal supply from M/s Monnet Daniel Coal Washrey Pvt. Ltd and M/S ACB India Ltd.